

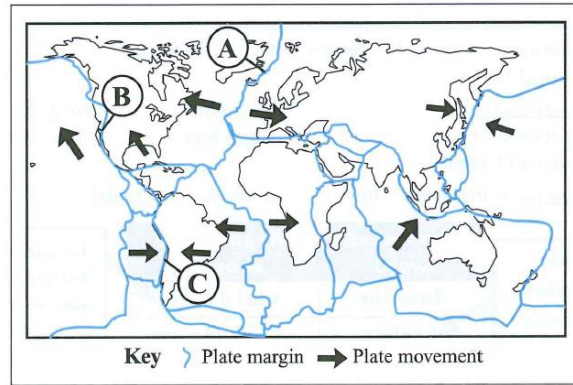
Geog your memory...



Study Figure 1, which shows the earth's tectonic plates A2.

1

Figure 1



1)

Using **Figure 1**, which **two** of the statements below are true?
Shade **two** ovals only.

- A The plate margin labelled A is a destructive margin.
- B The plate margin labelled A is a conservative margin.
- C The plate margin labelled B is a conservative margin.
- D The plate margin labelled B is a constructive margin.
- E The plate margin labelled C is a constructive plate margin.
- F The plate margin labelled C is a destructive plate margin.

[2]

2) Complete the following sentences A2

At a plate margin, the two tectonic plates are moving towards each other. Where a continental plate meets an oceanic plate, the plate is forced downwards into the mantle. As well as volcanoes, other landforms such as are created by this process.

[3]

3) Draw a destructive plate margin A2

4) What are natural hazards A1

Geog your memory...



Study Figure 1, which shows the effects of a volcanic eruption in Christchurch in 2011 and figure 2 which shows an earthquake in Nepal in 2015.

3

Figure 1



Figure 2



1) Using figure 2 and your own knowledge, outline 2 primary effects of either volcanic eruptions or earthquakes A9

i).....
.....

ii).....
.....

2) Now Outline 2 secondary effects A9

i).....
.....

ii).....
.....

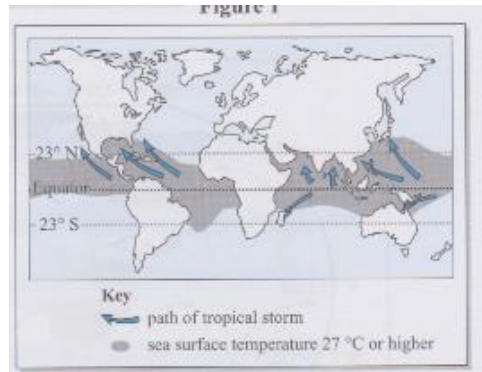
3) Suggest why earthquake damage may be greater in an HIC rather than a LIC? A5

.....
.....
.....
.....
.....
.....
.....
.....

Geog your memory...



4



1) Using figure 1 and your own knowledge, describe the distribution of tropical storms B1

.....

.....

.....

.....

2) Explain why tropical storms only occur in these areas in figure 1 B1

.....

.....

.....

.....

3) Outline two features of tropical storms? B2

i).....

.....

.....

.....

ii).....

.....

.....

.....

1) Outline 2 effects of the 2003 UK heatwave B6

.....

.....

.....

.....

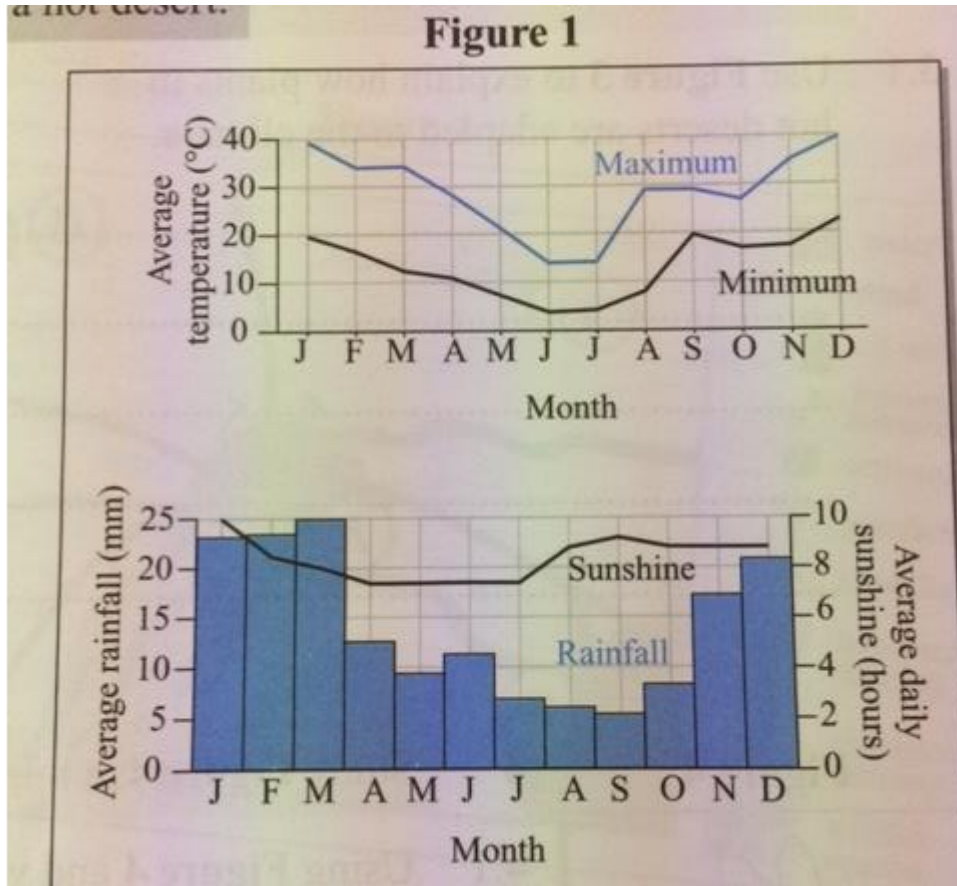
.....

Geog your memory...



5

Study Figure 1, which shows climate data for a hot desert



1) What is the average maximum temperature for December

.....

2) With reference to figure 1, describe two characteristics of the hot desert climate D2

Characteristic 1

.....
.....
.....
.....
.....

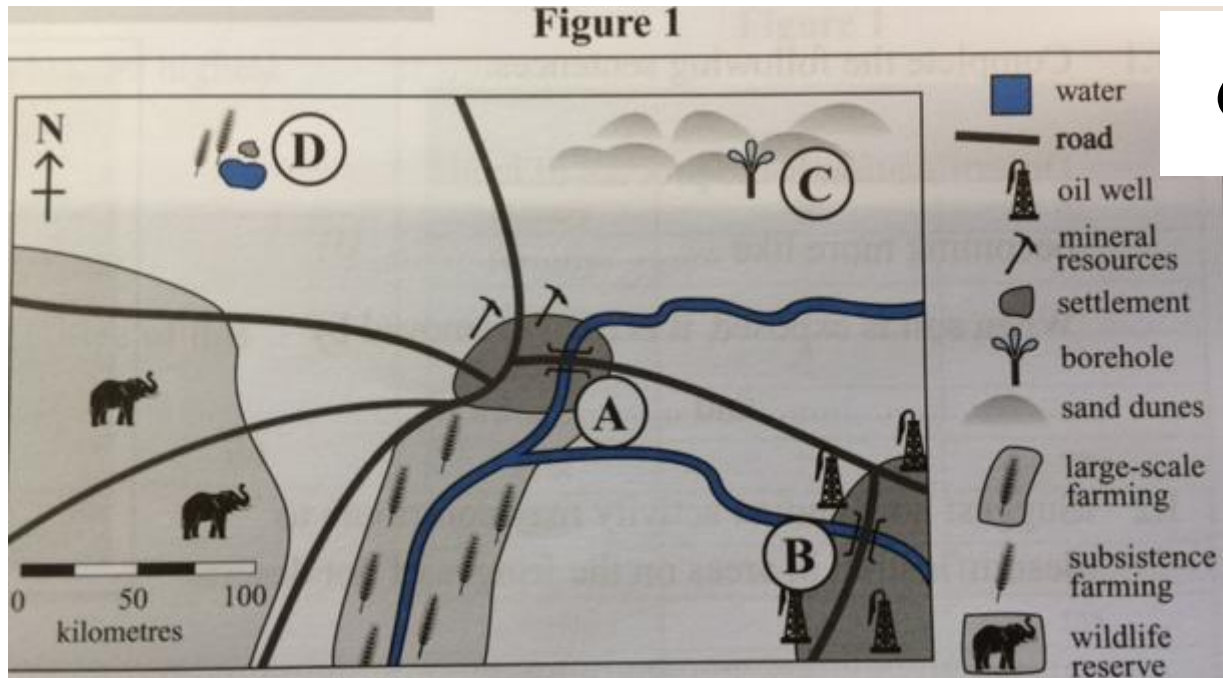
Characteristic 2

.....
.....
.....
.....

Geog your memory...



Study Figure 1, a map of a hot desert region showing some of the sources of income in different locations.



6

1) Describe the economic opportunities at location A

.....

.....

.....

.....

.....

2) Using evidence from figure 1, outline 2 challenges to economic development at location C

.....

.....

.....

.....

.....

3) Using figure 1, describe and explain the extent of development at location B compared to D? (6)

.....

.....

.....

.....

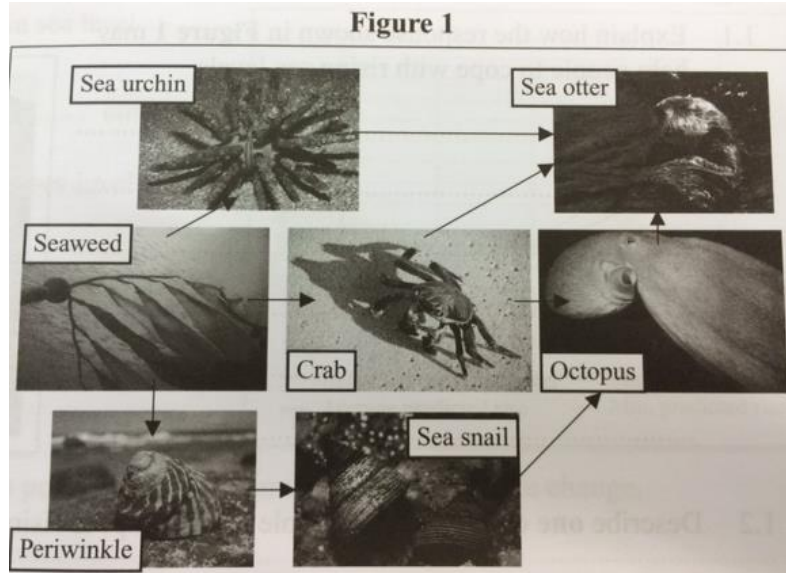
.....

.....

Geog your memory...



Study Figure 1, which shows part of a food web for a coastal ecosystem



7

1) Which of the organisms in the food web shown is the producer? D1

- a) Sea otter
- b) Crab
- c) Sea Snail
- d) Sea Weed

2) Give one example of a consumer from the food web shown in figure 1 D1

3) Using figure 1, explain how the population of octopuses and seaweed in this ecosystem might be affected if a disease reduced the crab population D1

Octopuses

Seaweed

4) Using figure 1, explain how the organisms in the food web might be affected if more sea otters were introduced into the area D1

Geog your memory...



Study Figure 1, a photograph of an area of tropical rainforest

Figure 1



8

1) Using figure 1, outline 2 characteristics of the vegetation in tropical rainforests D3

Characteristic 1

.....
.....
.....

Characteristic 2

.....
.....
.....

2) Explain how the rainforest vegetation shown in Figure 1 can support high animal populations D3

.....
.....
.....
.....

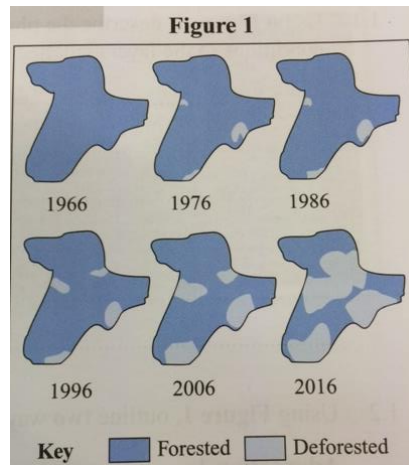
3) Describe the climate of Tropical rainforests (D2)

.....
.....
.....
.....
.....

Geog your memory...



Study Figure 1, a series of maps showing the extend of deforestation in an area between 1966-2016.



9

1) Using figure 1, describe the changes in the rainforest between 1966-1996 (2)

.....

.....

.....

.....

.....

.....

2) Outline 2 possible causes of deforestation D7

1.....

.....

.....

2.....

.....

.....

3) Outline 1 positive economic impact of deforestation D8

.....

.....

.....

4) Outline 2 environmental impacts of deforestation D8

1.....

.....

.....

.....

2.....

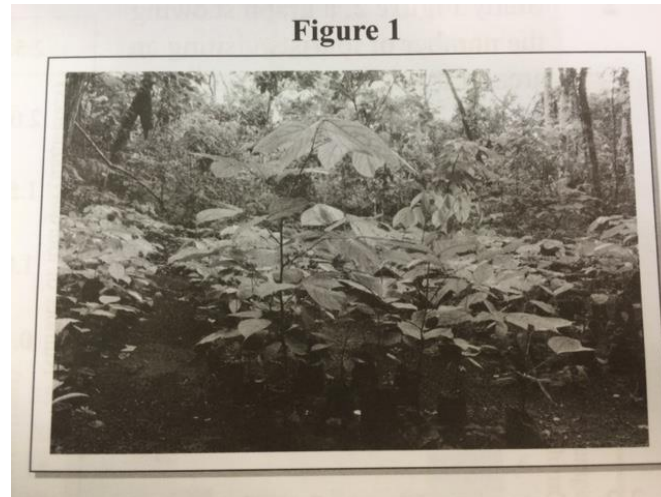
.....

.....

Geog your memory...



Study Figure 1, a photograph of mahogany (TREE) seedlings that are ready to be planted in an area of rainforest in a LIC



10

1) Using figure 1, explain one way in which rainforests can be managed sustainably D9

.....

.....

.....

.....

.....

.....

2) Suggest how making the area of rainforest shown in figure 1 into a National Park could enable it to be managed more sustainably D9

.....

.....

3) Explain how international agreements can encourage the sustainable management of rainforests D9

.....

.....

.....

.....

4) Explain how selective logging can help to make rainforests more sustainable D9

.....

.....

.....

.....

.....